

Pelican Patches



Issue 86 November 2017

Official Newsletter of the Westernport Quilters Inc
(www.westernportquilters.org)
P.O. Box 163, Tyabb, Vic 3913

President's Patch

Hello, welcome to November the month for our Christmas lunch breakup and the AGM.

Please remember to bring along your choice of selected food for the lunch also plate, bowl, cutlery, glass for juice and table decorations if desired plus a fat 1/4 if you want to exchange with another member.

I do hope you have all enjoyed this year at Westernport Quilters The committee have worked their butts off to make it an enjoyable year for each member and I think they have enjoyed doing so as well.

For my part I cannot believe my term of two years has come to the end and I would like to say a big thank you for accepting me as the President of this club. I consider myself lucky to belong to a club with a remarkable lot of women.

As this will be my last "President's Patch " I wish each of you a very healthy, safe and happy year for 2018 and also I welcome the new President and committee for 2018 and I know they will enjoy the new year to come.

With the best of wishes to you
happy stitching,
Heather

INSIDE THIS ISSUE

President's Patch	1
This year at Westernport Quilters	2
Birthdays & More	3
Service Directory	4
Diary Dates	4
Caring Quilts	5
Cooks' Corner	5
BOM	5
Do you now how to	6
Quilt Show information	7
Foundation piecing pattern	8

The Team

President	Heather Stafford
Vice President	Brenda King
Secretary	Gaynor Backx
Treasurer	Margaret Johnson
Newsletter	Janet Richardson
Workshops	Beverley Crank
	Lesley Kumar
Kitchen	Debbie Higgs
	Yvonne Pullin
Photographer	Brenda Dean
Caring Quilts	Min Wood
Web Administrator	Brenda Dean

OUR SPONSORS

Magic Patch Quilting
1525 Frankston Flinders Rd, Tyabb
Ph 5977 3332
www.magicpatchquilting.com.au

Bendigo Bank, Hastings

Quilters Pty Ltd
www.quiltersinternational.com

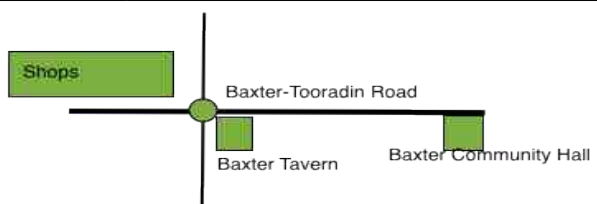
Palm Beach Quilting
7/2 Industry Boulevard, Carrum Downs
Tel: 9775 1601
www.palmbeachquilting.com.au

Prayer for the 21st Century

Dear Lord, Please don't let my husband be home
when all my online orders arrive.

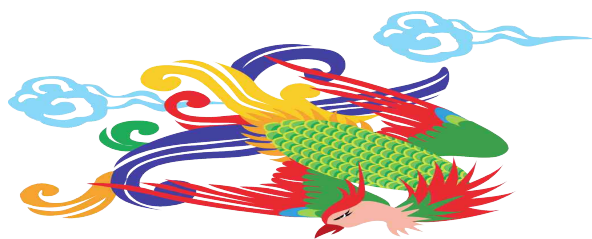
Amen

This Year at Westernport Quilters

January to June		July to November	
23	Art Appreciation Group –	July 4	Workshop – Baxter <i>Free hand Machine Stitching – Lee Vause</i>
Jan 17	Meeting – Tyabb Sit and Sew	18	Meeting – Tyabb <i>White Ribbon Lunch</i>
		24	Art Appreciation Group
Feb 7	Workshop – Baxter <i>Hexagons by machine – Brenda Dean</i>	Aug 1	Workshop – Baxter <i>Landscape wall hanging – Jenny Millar</i>
21	Meeting – Tyabb <i>Sue Devanny</i>	15	Meeting – Tyabb <i>Chris Beehag</i>
March 7	Workshop – Baxter <i>Cathedral Windows – Margaret Johnson</i>	19	Saturday Workshop – <i>Needle Turn Applique – Margaret Johnson</i>
21	Meeting – Tyabb <i>Ruth Nunn – Lions Club</i>		
18	Saturday – Baxter sit and sew <i>Workshop – Felt Wall Hanging – Brenda King</i>	Sep 5	Workshop – Baxter <i>Quilt as you Go – Janet Richardson</i>
27	Art Appreciation Group	19	Meeting – Tyabb <i>Lesley Edwards</i>
April 4	Workshop – Baxter - <i>Using Border Fabrics – Janet Richardson</i>	25	Art Appreciation Group
18	Meeting – Tyabb <i>Di Mitchell – Anzac Quilt</i>	Oct 3	Workshop – Baxter <i>Christmas Project</i>
		12	Mystery Bus Trip – <i>cost \$45</i> <i>Arrive 8.15 a.m. For a prompt depart 8.30 a.m. From hall car park</i> <i>Return 5.45 approx</i>
May 2	Workshop – Baxter <i>Flower Pouncing – Jenny Millar</i>	17	Meeting – Tyabb
16	Meeting – Tyabb <i>Quilt in and Big Morning Tea</i>	Nov	
26th - 28th	Rawson Retreat	21	Meeting – Tyabb <i>AGM and Christmas Lunch</i>
22nd	Art Appreciation Group	27	Art Appreciation Group
June 6	Vase of Flowers with Trapunto – Lee Vause	 <p style="text-align: center;">Workshops start at 9.30 – please arrive in time for a prompt start</p>	
17	Soup and Spud day at Baxter Fiddle Quilts		
20	Meeting – Tyabb Wynn Roper – Quilts of Valour		

Lucky Door Prize Winners October

Palm Beach – Heather Stafford
 Magic Patch – Jenny Allen
 Yuilles Road – Lesley Kumar
 Yuilles Road – Brenda Dean
 Yuilles Road – Sally Rule
 Yuilles Road – Judy Beresford
 donated prize - Min Wood



Best wishes go to all members who are unwell or having difficulties at the moment. You are in our thoughts and we hope that things improve for you and your families.

If you know of a member who is unwell please advise the secretary so that she can send a card.

Deadline for next newsletter is
8th Jan 2018.

Please send any contributions to
news@westernportquilters.org

Demonstrations

Feb	Converting a T Shirt – Jenny Millar
Mar	deferred
April	Perfect Narrow Spacer – Brenda Dean
June	Quick and Easy Quilting – Janet Richardson
July	Duplicating Foundation Papers – Margaret Johnson
Aug	Drunkards Path – Janet Richardson
Sep	10 Tips for quilters – Brenda Dean
Oct	Inside/Outside binding – Janet Richardson

WELCOME

At the welcome desk:

Nov Marg Brown, Keryn Beischer

For your information:

The welcome desk closes at 12 noon. The sign-in book is left on the table for latecomers. Money is to be given to the Treasurer, Margaret Johnson.

KITCHEN ROSTER

Co-ordinators – Debbie Higgs/Yvonne Pullin

November

A.M. Committee

P.M.

It is traditional that ladies on tea duty bring a plate to share

Please note:

ladies on morning duty need to be there at 9.30 a.m. to set up and ladies on afternoon duty should stay to help with clearing the kitchen.



**Happy Birthday to you
 Happy Birthday to you**

Happy November/December Birthday to:

Judy Beresford	Martina Burnell
Annette Burton	Coral Cunningham
Julie Fenn	Dot Rowley
Patricia Seignior	Lorraine Vidler
Beverley Wetherall	Val Batchelor
Kath Bellingham	Beverley Crank
Sue Carroll	Jennifer Ferguson
Faye Hester	Marie Jokanovic
Licia Lawford	Barbara Matson
Cheryl McCubbin	Chris Reymers
Sally Rule	Jean Wrangle
Lyn Wright	

SERVICE DIRECTORY

(Remember to take your WQ Membership Card)

Magic Patch Quilting

1525 Frankston Flinders Rd, Tyabb
Ph 5977 3332
Machine Quilting, Fabrics & Classes
10% discount for WQ members

Mornington Wool and Patchwork Centre

68 Yuilles Rd, Mornington
Ph 5975 4257
10% discount for WQ members

Sewing Bee Cafe

80 Baxter -Tooradin Road, Baxter
www.sewingbeecafe.com.au
10% discount for members

Treehouse Textiles

2b Empire Street, Mornington,
Ph: 0427 570 950
www.treehousetextiles.com.au
10% discount for WQ members

Snugglelyn Quilts (Lyn Wright)

Wide Backing, Batting, Cutters, Templates,
mats etc., fat quarters.
Computerised Long-Arm Quilting available
Special members prices - Open 6 days
Call Lyn on 5981 9397 OR 0412263539

Girraween Quilting

Edge to Edge and custom quilting
Sally Rule
Email: sally.rule@pac.com.au

Palm Beach Quilting

7/2 Industry Boulevard, Carrum Downs
Tel: 9775 1601

Craft Quarters

140-146 Station Street, Koo-Wee-Rup
Tel: 5997 1779
Email: sales@craftquarters.com.au
www.craftquarters.com.au

Rose Garden Quilting and Patchwork

Long Arm quilting and patchwork classes
Margaret Johnson 9789 0477

Threads and Tangles Long Arm Quilting

Tuition and All things Zentangle
Lee Vause 042 902 4299

Sewing Machine Repairs

Rick Wise
5983 1878 OR 0408 557 606

Darren Ricardo

Gardener/Handyman

Contact Number 0467 166 611
email darren@westernportquilters.org

Diary Dates

Ballaarat Quilters Inc. Biennial Exhibition

St Patrick's Community Hall
Cnr Dawson and Sturt Sts, Ballarat Central
Saturday November 4th 10-5/Sunday November 5th 10-4
Entry \$5.00
Over 100 quilts will be on display, featuring traditional,
modern, contemporary and art quilts. There will also be
shops, demonstrations, viewer's choice voting and raffle
quilt – raffle proceeds to the Brown Hill and District Lions
Club.
Website:- www.ballaaratquilters.com

Cobram Quilter's Club 10th Biennial Quilt Exhibition

Date: 4 – 5 November 2017
Time: 10am to 4pm Saturday; 10am to 3.30pm Sunday
Venue: Yarroweyah Hall, Murray Valley Highway,
Yarroweyah Vic.
Entry: \$5.00
Contact: Raynor Thomas 03 5872 2450; Lorinda Freeman
0419 329 388

Bluegum Quilters Patchwork Quilts Exhibition

Date: Saturday 11 November 2017 – **ONE DAY ONLY**
Time: 9.00am to 3.30pm
Venue: St James Church, Cnr Pender & Newcastle Streets,
Thornbury
Entrance Fee: \$5.00
craft stall, Devonshire Teas in our cafe
Further enquiries contact Heather: 0414 807 871

Australian Quilts in Public Places (AQIPP 2017)

16 November – 21 December 2017
Whitehorse Art Space, Box Hill Town Hall, 1022
Whitehorse Road, Box Hill.
Contact: australianquiltersassociation.com; email
aqipp@gmail.com

Spring Gathering hosted by Heathcote Quilters Inc. in conjunction with Victorian Quilters Inc.

When: 18th November 2017 **Time:** 10.00am to 4.00pm
BYO mug – coffee, tea and morning/afternoon tea provided
BYO lunch or there are several local cafés for lunch.
Venue: Heathcote RSL Hall, High Street, Heathcote
Map Reference: Melways ref X909 & VicRoads Country
Directory ref 45 C-D8, Town Map 276, D6
Entry: \$5.00 for Vic Quilters and visitors
Guest Speakers: Gladys Jackson and Barbara Dellar,
members of Strathdale Quilters Inc.
Shops: The Quilting Patch, Rochester
Gail's Emporium, Ballarat, Ancienne Creations, Heathcote
Thimble & Thread Quilting, Heathcote Quilters Inc. Trading
Table
Further Enquiries: President Christine Smith 03 5433
2321, 0428 617 152 or VP Caroline James 0428 628 482

Geelong Patchwork & Quilters Guild Quilt Exhibition: Quilts tell Stories - 24 – 26 November 2017

Time: 10am – 4.30pm
Venue: Deakin University Waterfront Campus
Entry: \$10.00
Contact: Lyn: lynetteweeks@gmail.com;
www.geelongpatch.org.au

Stitches and Craft

Note – new venue
Royal Exhibition Buildings, Melbourne
23rd-26th November



Cook's Corner

Beef, Basil and Tomato Loaf

With a simple twist you can turn your traditional meatloaf into a Mediterranean masterpiece. Today's classic Italian meatloaf is ideal served with mashed potato and some green beans.

Ingredients

650 g mince
1 onion, finely diced
1 egg, beaten
1 tablespoon wholegrain mustard
1/3 cup Italian parsley, chopped
Salt and pepper
12 basil leaves
150 g sun-dried tomatoes, diced
1/2 cup mozzarella, grated
3 eggs, hard boiled

Method

Preheat the oven to 190°C.

Combine the mince, onion, beaten egg, mustard, parsley, salt and pepper. Spoon half the mixture into a greased loaf pan. Top with the basil leaves, sun-dried tomatoes and mozzarella cheese. Lay the boiled eggs down the centre of the loaf. Press the remaining mince mixture over the eggs. Cover with foil.

Bake for 35 minutes. Remove the foil and bake for a further 10 minutes. Drain off the excess moisture before serving.

Block of the Month

Block of the month will start again in February.

Next year's blocks will be based on Japanese Crests. Sample will be shown in January

For Sale

BRAND NEW BROTHER NS55 SEWING MACHINE WITH WIDE TABLE.

Machine valued at \$594 is light weight so would be great for workshops. Table valued at \$100. Will sell for \$350. If interested please call me on 0409 619 850 or 9799 6420.

Brenda King

Caring Quilts

This is my final report for Caring Quilts, it's been an interesting 2 years and I've been continually amazed at the generosity of many of our members. Over that time I have received loads of fabric as well as finished quilts plus the generosity of time of those who have helped put our Caring Quilts together. I hope you will continue the good work and help the new Caring Quilts Co-ordinator as you have helped me.

A special thank you to Brenda Dean for giving us the Fiddle Quilt project which was a highlight of the year. We really got involved with it as she says that over 50 had been made. A vast number of these have been given to Somercare with some being kept for the Caring Quilts display at the Quilt Show in March.

With a further 25 quilts and with a few in the pipeline it should make for an interesting display indeed. The display will be kindly arranged by Heather Stafford. I won't be here much next year as hopefully I will be enjoying a few trips through out Australia in our motor home.

Min

Fabric Frolic 2018

12th - 28th January

Visit all seven shops during the fabric frolic.

2. When you make a purchase in store your passport will be validated.
3. Leave the completed passport in the container provided at the last store you visit.
4. Drawn 29 January 2018 and winners notified by telephone or email.

Book your ticket on the

Fabric Frolic Bus - Sunday 14 January

Join us on the Fabric Frolic Bus. Let our expert driver take the hassle out of getting around the Fabric Frolic shops and enjoy the company of other fabric loving frolickers as we whisk you around the Fabric Frolic.

There are two pick up points, Boronia and Moorabbin, each serviced by our air conditioned, 50 seat VIP coach. Your Bus Hostess will keep you informed about each shops' specials as you travel and there will be bonus treats just for you!

For more information go to our website. Bookings can be made at each shop. Please note some shops will be closed over the Christmas period. Please check individual shop websites for more information.

Do you know:

Making Your Own Bias Strips

Commercial bias has been around for decades. It can be purchased by the meter (usually on a card) and used both practically and decoratively, but bias strips can be made from any fabric to match your project.

True bias pieces are made from strips cut diagonally across the weave of the fabric. Cutting on the bias gives the piece extra flexibility for circles and curves as used in Celtic work (Fig 1) but strips can also be made from fabric cut on the straight of grain for a firmer straight-line application.



Fig 1

It is almost impossible to achieve a consistent width along the strip without a little help from some simple tools available at your quilt store. You have a choice of “Quilter’s Press Bars” or “Bias Tape Makers”. Both of these come in a range of sizes.

Quilter’s Press Bars

Prepare the pieces by cutting bias (Fig 3) or straight strips (Fig 4) from the selected fabric. These should be approximately three times the width of your finished strip: for example if the finished strip is 1/2 wide then the pieces should be cut 1 1/2- inches wide To make longer pieces you may need to join the strips diagonally (this will avoid bulk).

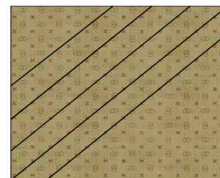
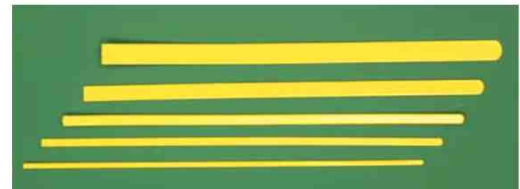


Fig 3



Fig 4

Quilter’s press bars are made from a heat resistant plastic designed to withstand the heat of a steam iron. They usually come in packs of five and range in width from 1/8-inch to 1/2-inch.

Fold the strips length wise with the **wrong sides together**. Using the presser bar as a guide, draw a seam line slightly wider than the bar measuring from the folded edge. Stitch along the marked line and trim the seam to 1/8- inch. (Fig. 5)

Insert the bias bar into the tube and roll the seam allowance to the back of the bar so that it lies down the centre. Press the seam in one direction, slipping the bar down the tube as you go. (Fig 6)

Remove the presser bar and press the strip flat to hold the crease.

Tip: For a crisper finish use steam or spray starch to press the seams but remember to keep your fingers away from the steam.

Bias Makers.

These bias makers enable you to make bias strips similar to commercial bias. They come in a range of sizes from 6mm (1/4-inch) up to 25mm (1-inch) and can be purchased separately or as a set of five.

Prepare the pieces by cutting bias or straight strips from the selected fabric. These should be twice the width of the finished strip. Join the pieces on the diagonal if you need a long strip.

Cut one end of the strip to a point to make it easier to thread through the bias maker. (Fig 7)

With the wrong side of the fabric face up thread this point through the back of the bias maker at the lower edge. (Fig. 8)

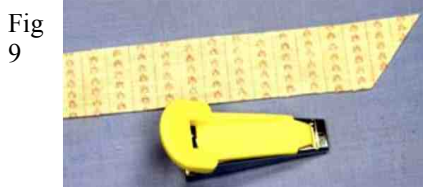


Fig 9

Fig 7



Fig 8

Turn the bias maker over and you will see a section of your fabric through the slot on the underside. Using a pin, slide the fabric towards the narrow end of the bias maker until it appears at the front.

As the fabric is passed through the bias maker the raw edges will automatically fold neatly into the centre. Secure the point of the fabric to the ironing board with a pin. (Fig 10)

Gently pull the bias maker to the left as you follow it with the point of the steam iron to press the folds in place.



Westernport Quilt Show – 17th-18th March 2018

The Team includes:

Carolyn Sweeting – Coordinator + Quilt Stands
Janet Richardson – Forms + Entry lists, delivery and collection of quilts
Brenda Dean – Advertising
Debbie Higgs and Yvonne Pullin – Catering
Rae Droop, Janet Taylor and Bron Mills – Trading Table
Martina Burnell and Glenda Daff – Quilt Challenge
Judy Beresford – Quilt Raffle
Louise Wrangle – Traders + Lucky Dip and door prizes
Lorraine Vidler – Rosters for volunteers
Bron Mills – Floats and money collection

Of course, the reason for, and most important part of the Show is the exhibition of Quilts, so we hope you're on the job with that!

Timeline

2017

September – entry forms will be on the web site or available at the meeting

November – raffle tickets will be available for sale in December

2018

16th January – our January meeting. Cut off date for entries.

Entry forms should be given to Janet Richardson

Rosters available

February – at the meeting. Debbie and Yvonne will have list for people willing to make slices for the show tea room.

Raffle tickets to be returned to Judy Beresford

Quilt Show

Friday 16th – Quilts and challenge quilts to be delivered to the Tyabb Hall between 9.30 a.m. and 11.30 a.m.

Items for the trading table to be delivered to the hall at these times. Items put on the trading table will attract a 10% commission for the club.

Friday/Saturday/Sunday – deliver slices for tearoom.

Anytime up the February meeting we are seeking donations suitable for the lucky dip. They do not have to be quilt related. Please do not wrap any donations.

Finish your quilt or challenge quilt.

Challenge for the Quilt show

The theme is - Musicals

Your quilt should depict the title of any popular musical from any era. The quilts will be displayed at the quilt show and visitors will be asked to guess the title of the musical. There will be a prize for the person who can guess the most titles and a prize for viewer's choice.

Your quilt can be square or rectangular but must be **no more than 12-inches or less than 8-inches on any side**. Rectangles can be portrait or landscape orientation.

This year this page will have a pattern for a foundation pieced block.

This month is Paper Split Diamond

Instructions for foundation piecing:

Trace the foundation block onto lightweight **non-iron** on vilene. With the wrong side of the foundation vilene facing up place a piece of fabric right side up over area 1, making sure to allow at least a ¼ inch seam allowance all round and pin to vilene.

2. Turn the foundation vilene over so that the lines are now facing up. Take the piece of card and place it against the line between 1 and 2 and fold the vilene over the card.

Trim the fabric parallel with this fold to give a ¼ inch seam allowance. Take the fabric for area 2 and align it with first fabric right sides together. Pin and flip back to ensure it covers area 2.

Fold back the foundation vilene and stitch along the line. Flip the fabric back and finger press the seam.

Working in numerical order repeat steps 2 to 10 until the block is complete.

Make sure you have a ¼ inch seam allowance all around the block.

